



Self Mitered Baby Blanket

Shared by Beverly Kuykendall

Coffee Chat 9/2024

General Notes

- This no batting blanket can be made in various shapes and sizes
 - The smaller piece, center or top, determines the size and shape of the finished unit
 - The larger piece determines the size of the backing plus border.
- The two pieces of fabric must be kept in the same ratio, i.e., the larger piece must extend the same amount on all sides of the smaller piece.
- This technique can also be used to make placemats, napkins, table runners, and table toppers.

Materials

- Flannel Fabric, preferred for blanket
- For a regular size baby or receiving blanket:
 - Center/top – 1 yard --- cut 30” square
 - Back and Border Fabric – 1 ¼ yard --- cut 40” square
- Smaller fabric sizes may be used to learn the technique. Usually, the back/border piece is 10“ wider and 10” longer than the top piece.



Before Sewing:

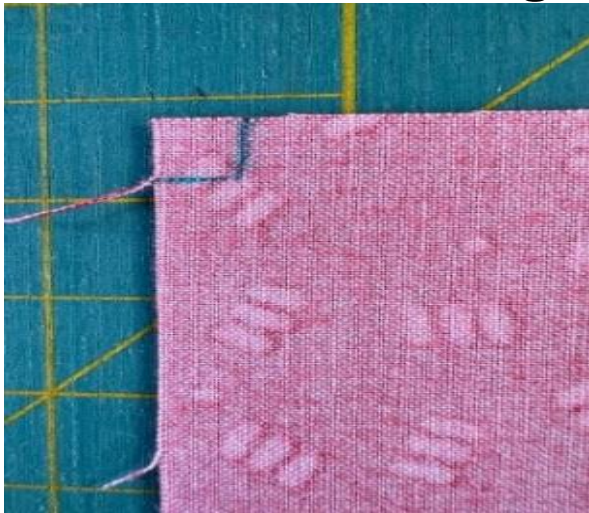
Print = 40” square Background/Border

Red = 30” square Center/Top

5” border all around

Instructions

1. Find and mark the center of all 4 sides of each piece of fabric.
2. On the wrong side of the top piece, mark a $\frac{1}{4}$ " square at each corner.
3. Along one of the 4 sides mark a 3"-5" opening to leave open to turn the fabric right side out
 - Placement of the opening is usually between the center mark and the $\frac{1}{4}$ " mark on the edge



$\frac{1}{4}$ " square
at corners



- Corner square
- Pins to identify opening
- Center mark

4. Place the larger backing piece and top piece, right sides together, matching the center marks.

- The fabrics should have the “grain of fabric” going in the same direction.

5. One side at a time, match and pin the center marks

- Starting from the center pin smooth and pin the 2 fabrics together
- There should be excess of 5” of fabric at each end





6. Sew $\frac{1}{4}$ " seam from one $\frac{1}{4}$ " marked corner to the other, backstitching at both ends.



7. Repeat #6 for the remaining 3 sides
 - Leave the pre-marked 3"-5" open for turning
 - While the unit is still inside out, grab 2 of the corner tails and shake the unit until it approximates the folded border
8. The fabric piece will now have four "tails/ears" sticking out

9. While the blanket is still inside out:

- Grab/pinch the sewn tip of one corner with one hand; with the other hand grab the two adjacent sewn sides, matching them together and folding the tail in half.
- Make sure the resulting folded unit is nice and smooth on a flat surface.
- It is all right if the edges of the tail do not perfectly match, just make sure the rest of the blanket and the folded border are smooth and flat.



Grab/pinch
the sewn tip of
one corner



Grab the two
adjacent sewn
sides,
matching
them together

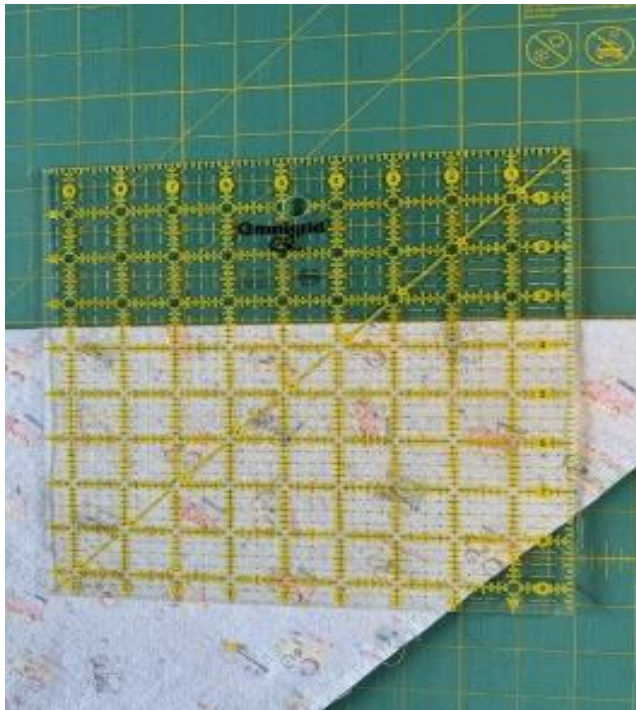
10. Place a straight ruler line along the folded edge and match the side of the ruler to the end of your stitching that stopped at $\frac{1}{4}$ "

- Blue dot on the picture below

11. Draw a line and pin to secure

- Sew on the marked line, back stitching at each end

12. Mark and sew the remaining 3 corners in a similar manner.



- Ruler at a straight line along the fold
- Right side of ruler meets end of stitching



Sewing line from edge of fold to blue dot



13. Turn the blanket right side out

- Check to make sure the corners are appropriately mitered
- Turn inside out again

14. Flatten out each corner again and cut $\frac{1}{4}$ " from the sewn line

- Cut should be the shape of a triangle



Cut tail off $\frac{1}{4}$ "
from sewn line



Cut fabric the
shape of a
triangle



26. Press open the seam for each mitered corner.

16. Turn the blanket right side out
 - Shake the fabric to get the borders in place
 - Lay the blanket on a flat surface then smooth it out to even out the borders.
 - Use a blunt tool to poke out the mitered corners if needed.
 - Final borders should be approximately 2.5" on all sides, but may not be perfect!
17. Smooth and iron the entire unit
 - Seams should be pressed toward the border
 - The seam left open should automatically close during pressing
 - Pin the border in place in preparation for top stitching





18. Decide how you want to top stitch the edge of the border

- Straight stitch along the border 1/8" from the seam or decorative stitch that catches both sides of the seam (Optional: use a blind hem foot and move the needle two positions to the left.)
- Top stitching will also close the turning opening
- Consider using contrasting thread

19. The blanket can also be quilted to better hold the fabrics in place

- Quilting should be large and open to minimize any puckering.

20. Optional: Top stitch 1/8" along outside border edge.

Determining Various Sizes

- Determine how big and what shape (square or rectangle) you want the completed size
- Determine how wide you want the border
- The back/border piece will be the completed length + the border width doubled, plus $\frac{1}{2}$ " seam allowance by the completed width + the border width doubled, plus, $\frac{1}{2}$ ".
- The top size will be the completed length minus the border width doubled, plus $\frac{1}{2}$ " seam allowance by the completed width + the border width doubled, plus $\frac{1}{2}$ ".
- Example: Finished Placemat to be 14" X 18"; borders of 2"
 - Cut back/border fabric $14+4+\frac{1}{2}$ (18 $\frac{1}{2}$ ") X $18+4+\frac{1}{2}$ (22 $\frac{1}{2}$ ")----cut back/border fabric 18 $\frac{1}{2}$ " X 22 $\frac{1}{2}$ "
 - Cut the top piece $14-4+\frac{1}{2}$ (10 $\frac{1}{2}$ ") X $18-4+\frac{1}{2}$ (14 $\frac{1}{2}$ ") ---cut top fabric 10 $\frac{1}{2}$ " X 14 $\frac{1}{2}$ "

References- Websites with video tutorials

- Make a self-binding baby blanket with Jenny Doan of Missouri Star (2012)
- Make a baby blanket with a mitered corner- It's simple to sew; Patchwork Posse (2024)
- Thimble Towne tutorial
https://www.facebook.com/watch/live/?ref=watch_permalink&v=1490308801575519